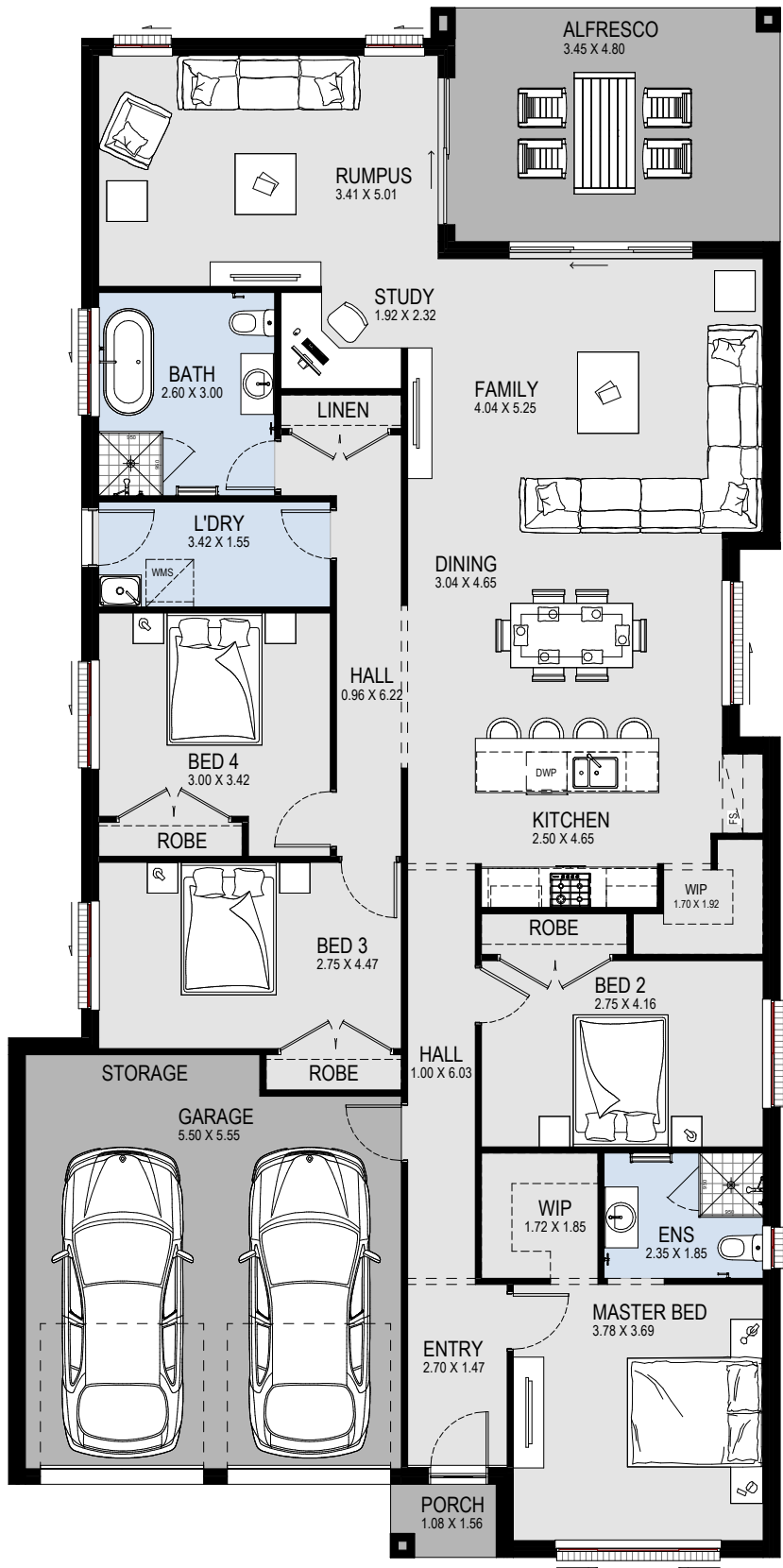


9m

10m

12.5m



# Newport 25

SUITABLE FOR:

**12.5M + FRONTAGE**

Suitable for zero lot boundary

Ground:	179.83m <sup>2</sup>	Garage:	35.76m <sup>2</sup>
Alfresco:	16.72m <sup>2</sup>	Porch:	1.68m <sup>2</sup>
Total:	233.99m <sup>2</sup>	Width:	11.39m
Squares:	25sq	Depth:	22.42m